



12 Frankland Crescent, Lower Parkstone, Poole BH14 9PX  
£1,250,000 Freehold





**\*\*WONDERFUL FAMILY HOME\*\*** An attractive four bedroom, four reception room property positioned in **QUIET ROAD**, within Lower Parkstone. **IMPRESSIVE REAR GARDEN**. Vendor suited.

- LARGE FAMILY HOME
- FOUR BEDROOMS
- FOUR RECEPTION ROOMS
- SOUTH WEST FACING GARDEN
- BADEN POWELL CATCHMENT
- VENDOR SUITED

### Lower Parkstone

The Lower Parkstone area offers easy access to the renowned award winning Blue Flag beaches stretching from Bournemouth through to Sandbanks with views of the Isle of Wight and Purbeck Hills.

Ashley Cross Village, with its array of shops, ranging from coffee shops, art galleries to restaurants is within close proximity of the property. The Victorian green in the centre of the village offers various social events throughout the year and an area to relax and enjoy the village atmosphere. Bournemouth and Poole town centres are also within easy reach with a more diverse range of high street shops, entertainment and recreational facilities.

Located nearby is Whitecliff Park which is ideally located for Harbour Walks together with Poole Harbour with its water sports and boating activities.

Transport communications are excellent as the main line railway station at Parkstone provides services to Southampton and London. The start of the Wessex Way, (A338) is located approximately 2 miles away and offers access to the M27 motorway with London 1 hour 30 minutes commute. Bournemouth and Southampton International Airports are also nearby and there is a ferry terminus at Poole Harbour with services to the Channel Islands and mainland Europe.

### Property Comprises

This impressive four bedroom detached house is set on quiet crescent within the heart of Lower Parkstone and only a short walk of the amenities at Penn Hill Village. The current owners have lived in the house for nearly 40 years and have extensively remodelled and extended the property to a high standard, creating an outstanding family home. Bright, spacious and extremely well presented throughout, arranged over two floors to offer a flexible accommodation approaching 3000sq ft.

The ground floor consists of an impressive entrance hall, a modern style kitchen open plan to the family room, formal living room, home office/playroom, dining room, utility room and a WC. All principle reception rooms offer direct access to the the raised deck and the impressive south westerly rear garden which is a particular feature of this home, being private, sunny and an ideal place for entertaining and family life.

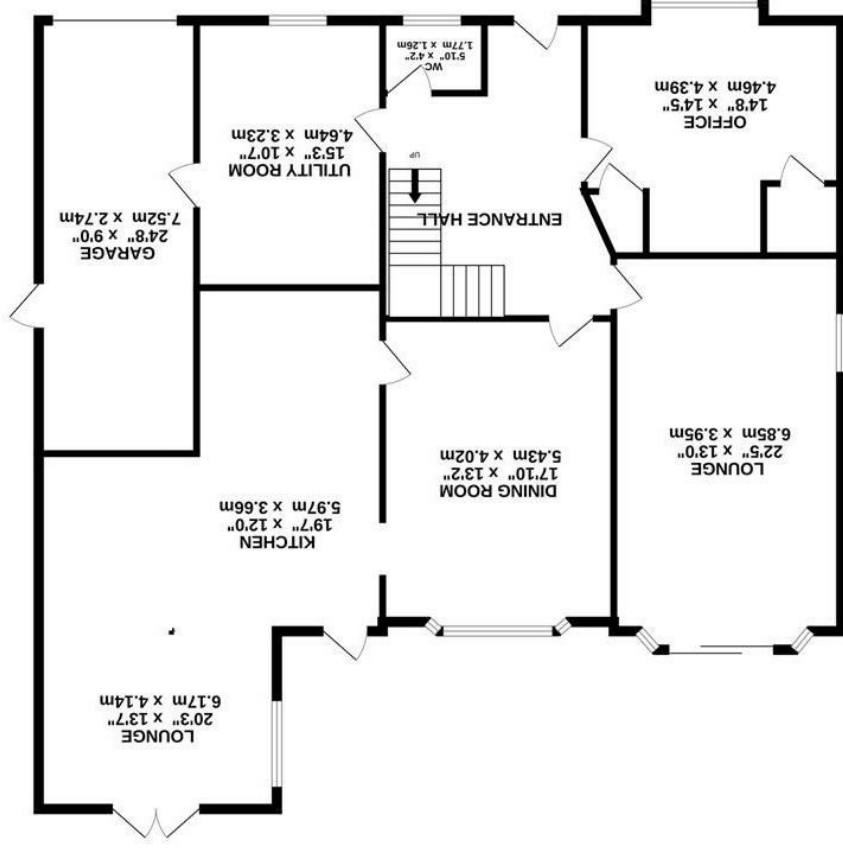
The first floor boasts a large principle bedroom with en suite, three further double bedrooms and modern family bathroom.

The drive to the front of the property is level offering off road parking for several vehicles and access to the integral garage, there is also gated side access to the rear garden.

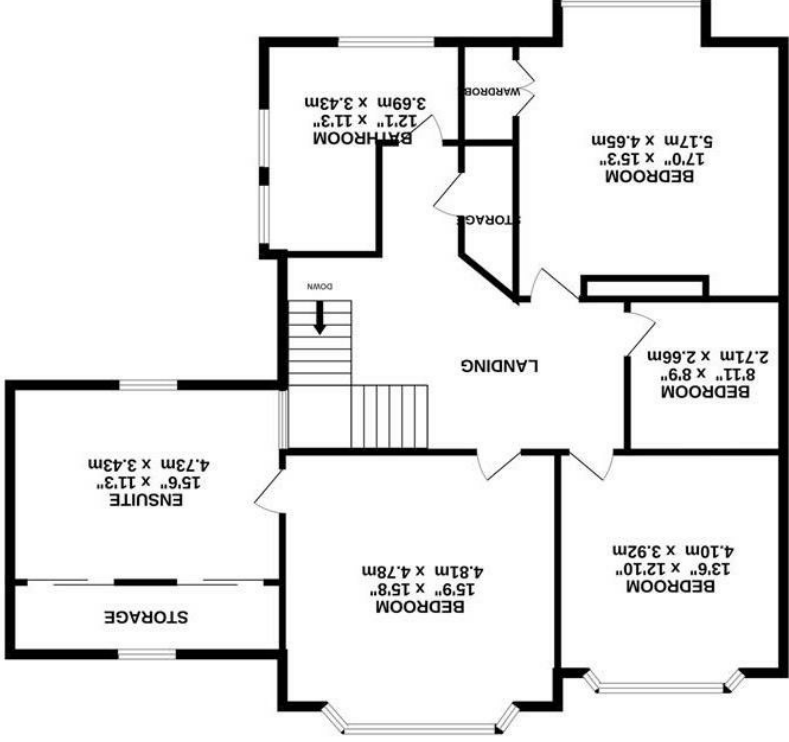




**GROUND FLOOR** (148.5 sq.m.) approx.



**1ST FLOOR** (125.2 sq.m.) approx.



**TOTAL FLOOR AREA : 2946 sq.ft. (273.7 sq.m.) approx.**

Whilst every attempt has been made to ensure the accuracy of the floorplan contained here, measurements of doors, windows, rooms and any other items are approximate and no responsibility is taken for any error, omission or mis-statement. This plan is for illustrative purposes only and should be used as such by any prospective purchaser. The services, systems and appliances shown have not been tested and no guarantee as to their operability or efficiency can be given.

Made with Metropix ©2023

All room dimensions given above are approximate measurements  
 These particulars are intended only to give a brief description of the property as a guide to prospective buyers. Accordingly:  
 • Their accuracy is not guaranteed and neither Key Drummond Estate Agents, nor the vendors accept any liability in respect of their contents.  
 • They do not constitute an offer of contract for sale.  
 • Any prospective purchaser should satisfy themselves by inspection or otherwise as to the correctness of any statements or information in these particulars. Please refer to the Agents if you require further clarification or information.  
 The Agent has not tested any apparatus, equipment, fixtures and fittings or services and so cannot verify that they are in working order or fit for the purpose. A buyer is advised to obtain verification from their Solicitor or Surveyor.  
 References to the Tenure of a Property are based on information supplied by the Seller. The Agent has not had sight of the title documents. A Buyer is advised to obtain verification from their Solicitor.

Energy Efficiency Rating	
Energy Efficiency Rating: <b>A</b>	Very energy efficient - lowest running costs
Energy Efficiency Rating: <b>B</b>	Energy efficient - lower running costs
Energy Efficiency Rating: <b>C</b>	Decent energy efficiency - lower running costs
Energy Efficiency Rating: <b>D</b>	Below average energy efficiency - higher running costs
Energy Efficiency Rating: <b>E</b>	Low energy efficiency - higher running costs
Energy Efficiency Rating: <b>F</b>	Very low energy efficiency - higher running costs
Energy Efficiency Rating: <b>G</b>	Lowest energy efficiency - highest running costs

Environmental Impact (CO <sub>2</sub> ) Rating	
Environmental Impact (CO <sub>2</sub> ) Rating: <b>A</b>	Very low environmental impact - lower CO <sub>2</sub> emissions
Environmental Impact (CO <sub>2</sub> ) Rating: <b>B</b>	Low environmental impact - lower CO <sub>2</sub> emissions
Environmental Impact (CO <sub>2</sub> ) Rating: <b>C</b>	Decent environmental impact - lower CO <sub>2</sub> emissions
Environmental Impact (CO <sub>2</sub> ) Rating: <b>D</b>	Below average environmental impact - higher CO <sub>2</sub> emissions
Environmental Impact (CO <sub>2</sub> ) Rating: <b>E</b>	Low environmental impact - lower CO <sub>2</sub> emissions
Environmental Impact (CO <sub>2</sub> ) Rating: <b>F</b>	Very low environmental impact - lower CO <sub>2</sub> emissions
Environmental Impact (CO <sub>2</sub> ) Rating: <b>G</b>	Lowest environmental impact - lowest CO <sub>2</sub> emissions